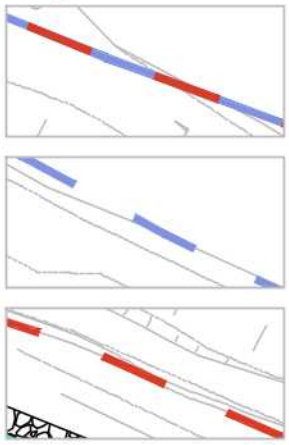


**Legend:**



Desired and actual route of footpath coincide

Desired route of the footpath

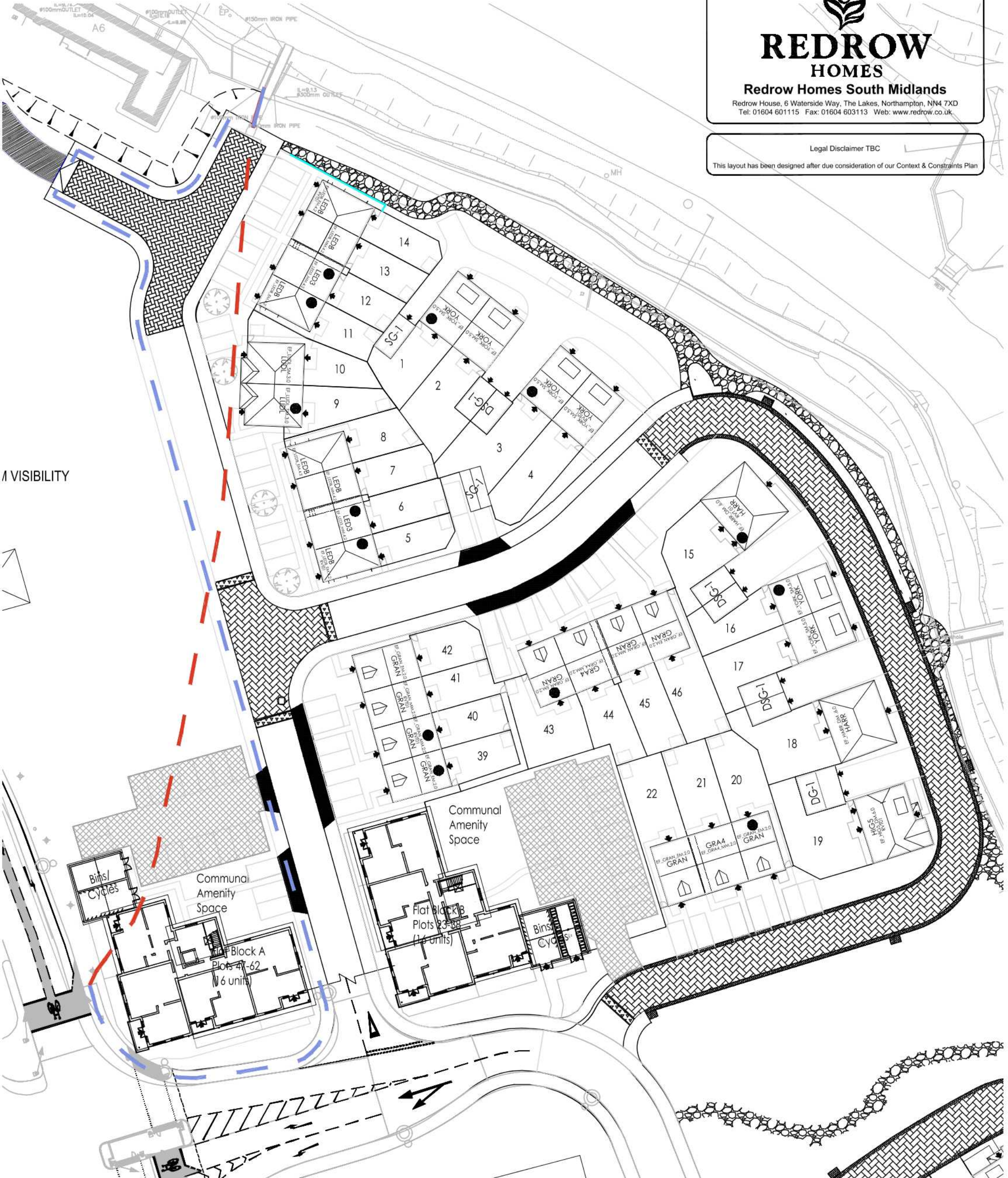
Actual route of the footpath



Development		<b>Cambridge Road</b>	
Location		Hauxton	
Marketing Name		Hauxton Meadows	
Drawing Title		Footpath FP5	
Drawing Number			
Revision	-	Scale @ A0	NTS
Drawn By	MW	Date Started	05.07.18
Checked by		Date	

**REDROW**  
**HOMES**  
**Redrow Homes South Midlands**  
 Redrow House, 6 Waterside Way, The Lakes, Northampton, NN4 7XD  
 Tel: 01604 601115 Fax: 01604 603113 Web: www.redrow.co.uk

Legal Disclaimer TBC  
 This layout has been designed after due consideration of our Context & Constraints Plan



1 VISIBILITY